



# Machining specialists

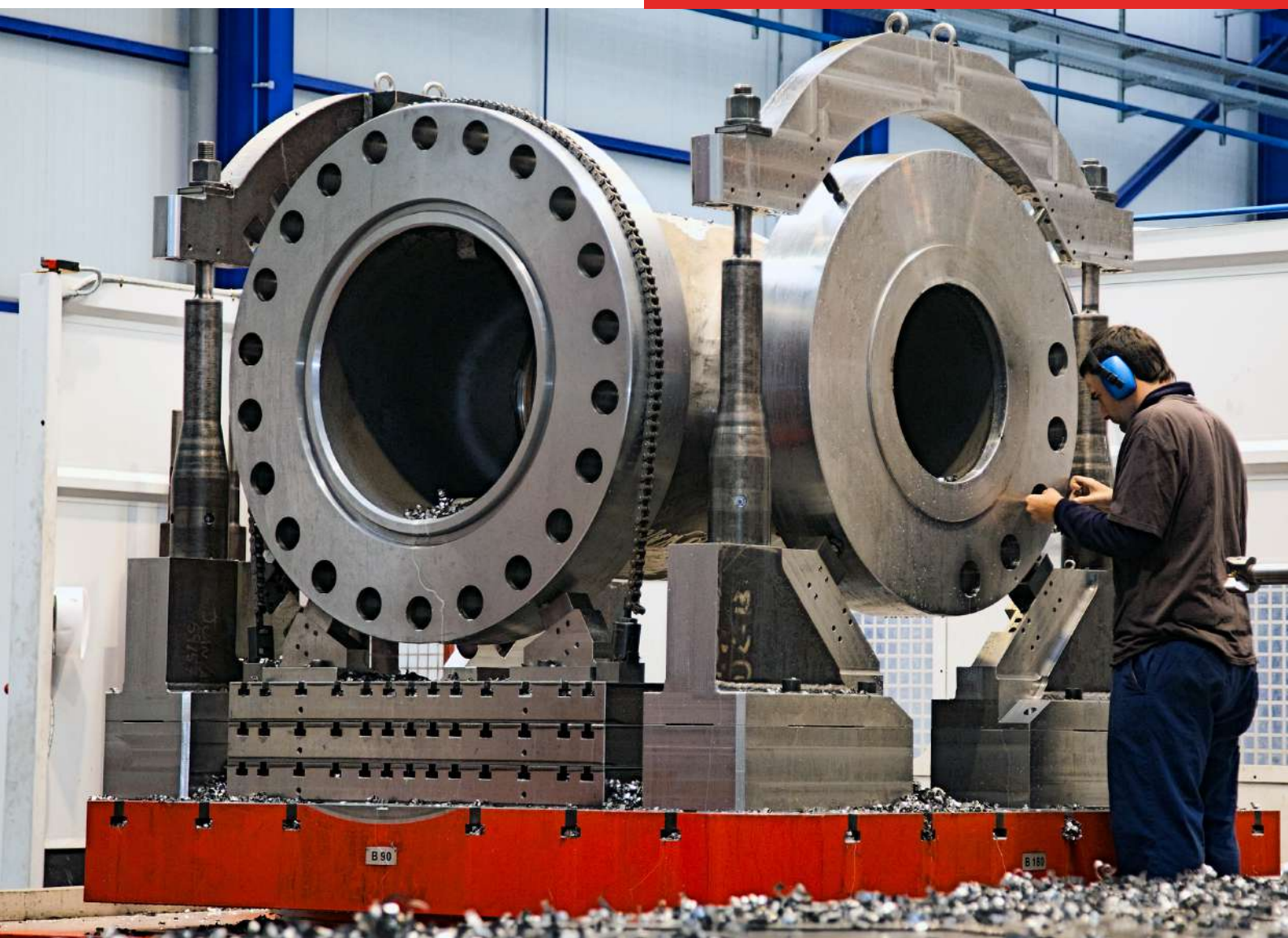
**arri**

# Machining solutions provider

We bring **over 30 years** of experience in the sector, during which our technical expertise and strong adaptability have been essential. These qualities have positioned ARRI as a trusted reference in valve machining.

Throughout our journey to becoming specialists in valve machining, Trevisan machines have been essential due to their suitability for machining different types of valves (gate, ball, globe, check, plug, butterfly, etc.), lifting elements, fittings and others, for different applications (oil & gas, nuclear, subsea, desalination, railway, cryogenic, etc.), and materials (stainless steel, Inconel, duplex, etc.).

We integrate complementary services such as raw material management, welding, non-destructive testing, etc.



# Capabilities

At ARRI, our machining capabilities allow us to offer a complete range from medium to large valves ( $\varnothing$ 2400 mm and 25 t).

Valve machining range

# up to 25 t

ARRI's capabilities have grown thanks to investments in cutting-edge technology. We currently have a highly qualified staff of 60 professionals and the resources for machining within a 3500 m<sup>2</sup> facility. We offer a high quality service with the permanent objective of continuous improvement.

Range of machining from 2-inch valves right up to 25 t parts



**Mori Seiki 2500 S-Z**

2" & 300 lbs. BODY  
MAT: 316



**Trevisan DS450**

3" & 2500 lbs. BODY  
MAT: F92



**Trevisan DS900**

Compressor Casing  
MAT: CF8



**Trevisan DS1200**

13" & 1500 lbs. BODY  
MAT: F22 + INCONEL 625  
OVERLAY



**Trevisan DS1200**

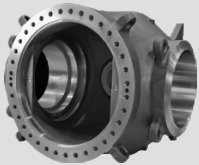
52" & 300 lbs. BODY  
MAT: LCC



# Machining

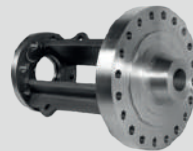
Thanks to the ongoing improvement of technological resources and management processes, ARRI has become a benchmark in the valve machining sector.

The ability to offer a range of machining from 2-inch valves right up to 25 t parts, means that ARRI is capable of providing a complete solution to meet the machining needs of its customers.



## Large-Scale

ARRI is especially qualified to machine large-scale valves. The Trevisan DS1200 can machine valves with a flange of up to 2,400 mm and 25 t in weight.



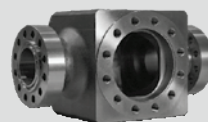
## Exotic Alloy

ARRI adapts its technical resources to each material, leveraging extensive experience with exotic alloys like stainless steel, inconel, duplex, and stellite to perform demanding machining tasks.



## Cast-Iron

The majority of the valves machined at ARRI are cast-iron valves. An exhaustive control is made of the machining process to ensure the perfect condition of the material.



## Forged Steel

Based on its knowledge and experience of machining forged steel valves, ARRI adapts to meet the different characteristics that forged steel valves have compared to cast-iron valves.

# Machinery

ARRI has a wide range of machinery with state-of-the-art technology, adapted to achieve the high-quality levels each customer requires.

To provide a comprehensive machining service, ARRI operates an advanced section of Trevisan machining centres, with the largest model capable of handling parts up to 25 tons—part of a continuously evolving machine park. In addition, it features a wide variety of CNC lathes, milling machines, and a conventional machining area, allowing us to take on a wide range of projects.



# Trevisan

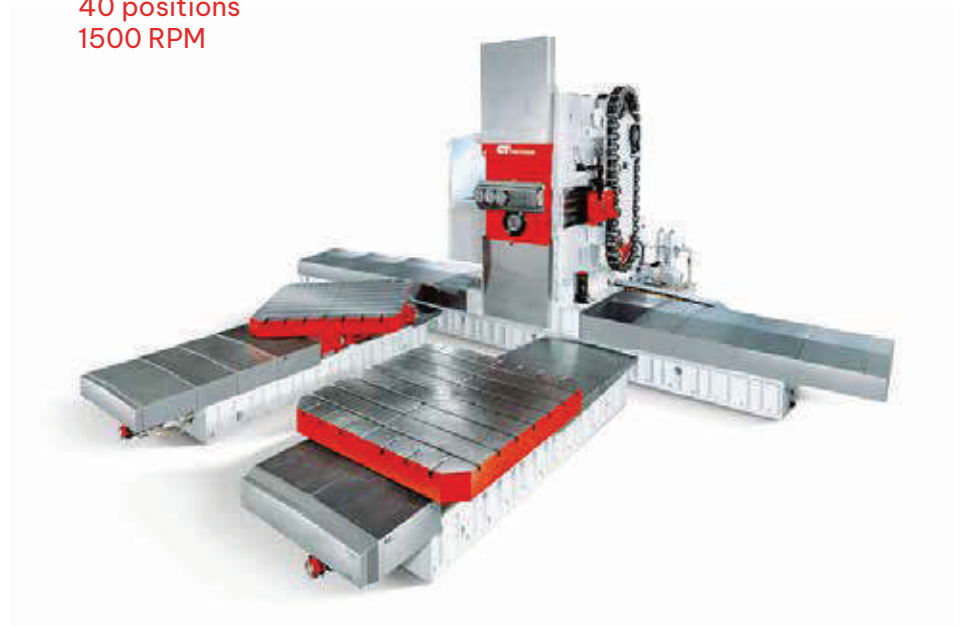
## DS1200/450C

### HORIZONTAL MACHINING CENTRE

These Trevisan machines include TREVISAN DS1200/450C model, which is capable of machining large-scale parts (up to Ø2400 mm and 25t tons)

Capable of machining parts with a flange of 2400 mm and a weight of 25,000 kg.

X axis travel	7500 mm
Y axis travel	1900 mm
Z axis travel	2200 mm
Turning headstock U	travel 450 mm
Max. turning Ø	2400 mm
Pallet	2400 mm x 2400 mm
N° of tables	2
Tool storage	40 positions
Max. spindle speed	1500 RPM



# Trevisan DS900/300C

## HORIZONTAL MACHINING CENTRE

Equipped with two tables. Supports up to 6000kg on each pallet.

---

X axis travel	2700 mm
Y axis travel	1470 mm
Z axis travel	1700 mm

---

Turning headstock U	travel 300 mm
Max. turning Ø	1500 mm
Pallet	1500 mm x 1500 mm

---

N° of tables	2
Tool storage	40 positions
Max. spindle speed	1500 RPM



# Trevisan

## DS600/250C

### HORIZONTAL MACHINING CENTRE

We have two machines of this model, fully equipped with 8 assembly tables in order to synchronise operations.

---

X axis travel	1400 mm
Y axis travel	940 mm
Z axis travel	1100 mm

---

Turning headstock U	travel 200 mm
Max. turning Ø	1150 mm
Pallet	870 mm x 870 mm (1) 1100 mm x 1100 mm (3) 1240 mm x 970 mm (2) 1240 mm x 1240 mm (2)

---

N° of tables	8
Tool storage	54 positions
Max. spindle speed	2800 RPM



# Trevisan

## DS450/130C

### HORIZONTAL MACHINING CENTRE

Equipped with two tables. Supports up to 2000 kg on each pallet.

---

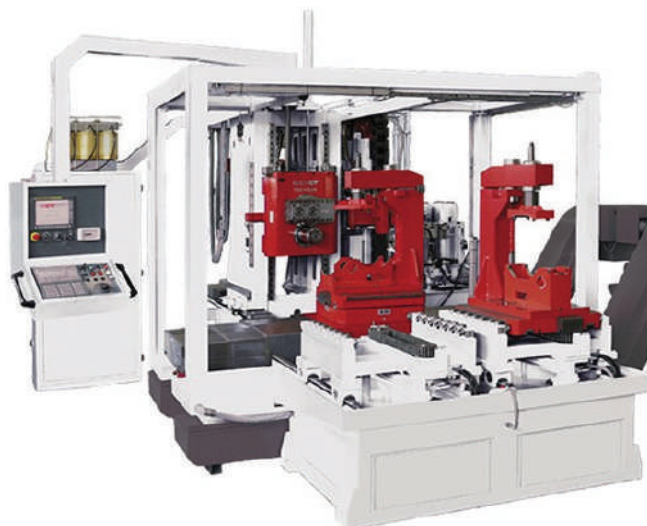
X axis travel	1000 mm
Y axis travel	780 mm
Z axis travel	900 mm

---

Turning headstock U	travel 130 mm
Max. turning Ø	600 mm
Pallet	700 mm x 700 mm

---

N° of tables	2
Tool storage	46 positions
Max. spindle speed	3000 RPM



# Trevisan

## DS300/70C

### HORIZONTAL MACHINING CENTRE

Equipped with two tables. Supports up to 6000kg on each pallet.

---

X axis travel	700 mm
Y axis travel	520 mm
Z axis travel	600 mm

---

Turning headstock U	travel 75 mm
Max. turning Ø	410 mm
Pallet	600 mm x 750 mm   600 mm x 600mm

---

N° of tables	2
Tool storage	46 positions
Max. spindle speed	2800 RPM



# C.N.C turning



**MORI-SEIKI MT2500-SZ**

Max. turning $\varnothing$	350 mm
Tool storage	120 positions
Max. spindle speed	12000 RPM
B axis rotation	+/- 120°
Y axis travel	+/- 115 mm



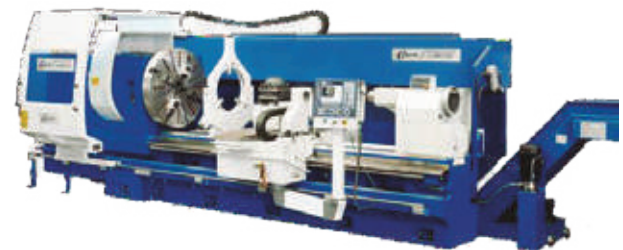
**MAZAK Slant Turn Nexus 550M**

Max. turning $\varnothing$	910 mm
Max. turning length	2000 mm
Motorized tool	



**PUMA 700LM**

Max. turning $\varnothing$	900 mm
Max. turning length	3000 mm
Rotary table	
SMW-AUTOBLOCK AXN 570	
Motorized tool	



**GURUTZPE A1000**

Max. turning $\varnothing$ between centres	900 mm
Max. turning length	1340 mm
Rotary table	2500 mm

# Milling machine



## CORREA ANAYAK AXIA

X axis travel  
Y axis travel  
Z axis travel  
Universal Automatic Head  
differential 1° (UAD)  
Tool storage

7000 mm  
1200 mm  
2000 mm

40 positions

## CORREA ANAYAK PRISMA

X axis travel  
Y axis travel  
Z axis travel

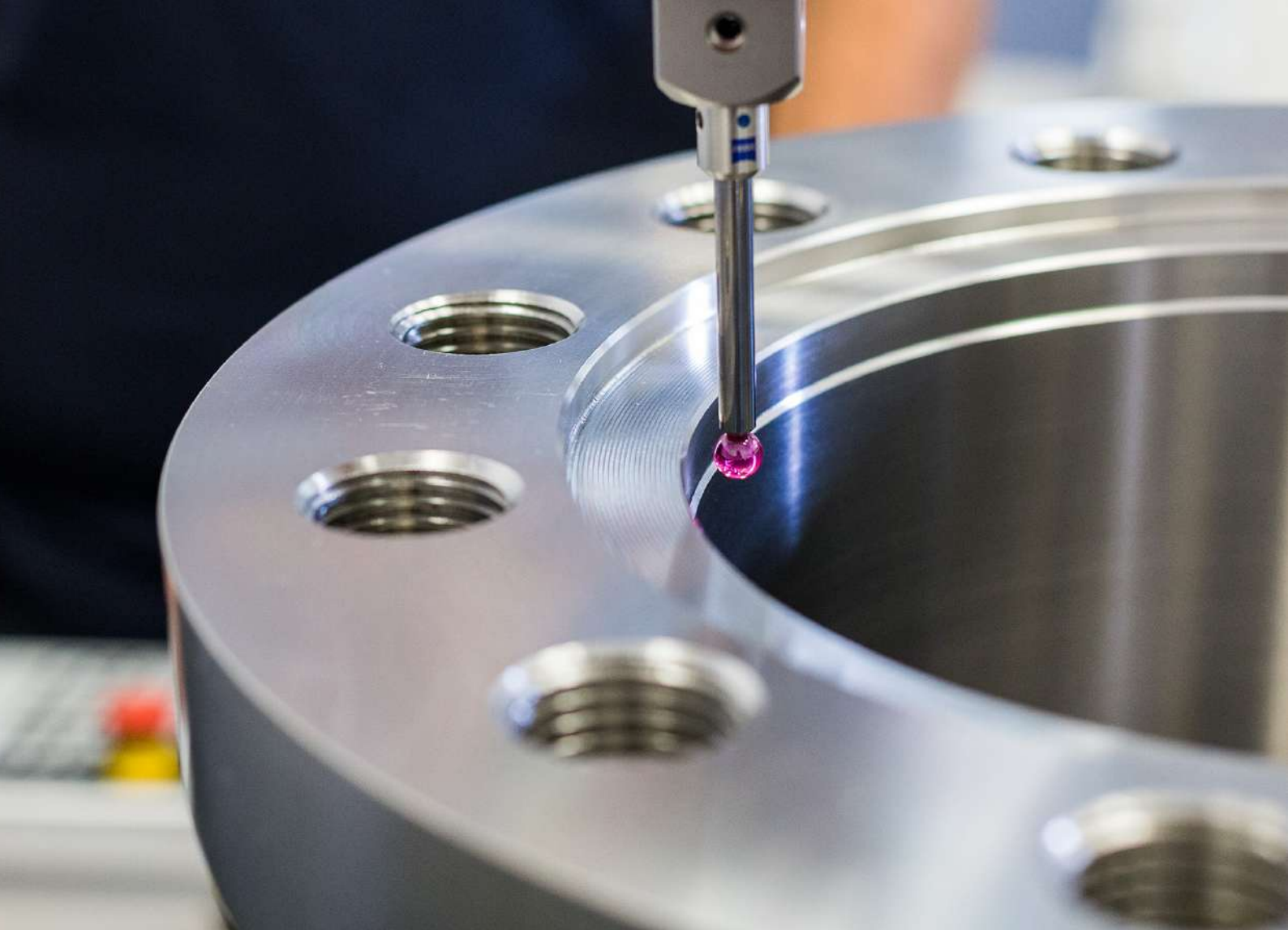
2000 mm  
1000 mm  
1000 mm

## ZAYER BF4000

X axis travel  
Y axis travel  
Z axis travel

4000 mm  
1500 mm  
1250 mm





# Quality

## ISO 9001:2015 CERTIFICATION

In ARRI backs continual improvement and we offer a quality service that meets the needs of our costumers

At ARRI, we are committed to continuous improvement and offer a quality service tailored to the needs of our customers. We have the three-dimensional machine Zeiss Contura G2 which enables us to take high-precision measurements. This capability makes ARRI a flexible and versatile company, adaptable to the needs of all types of customers and projects.

### Measuring Range X, Y, Z

1000 mm, 1200 mm, 800 mm

# Customer focus

ARRI is a company that is underpinned by its people, and is committed to always achieving customer satisfaction

01

## Staff

The professionals at ARRI are the driving force behind innovation and continuous improvement in our company.



03

## Technical analysis

Fulfilling customer needs starts with understanding them and providing the best solution in each case.



05

## Initial control

Pre-production analysis, with every phase under control.



07

## Intermediate checks

Constant monitoring of product quality throughout the production process.



09

## Non-destructive testing

One of the most in-demand complementary services among our clients.



02

## Committed to our customers

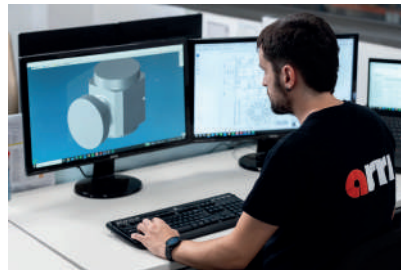
At ARRI, the client is always at the centre of every decision.



04

## Programming

A constantly evolving technical office develops the technical strategy for each project.



06

## Precision machining

This is the pillar on which our more than 30 years of experience, backed by the loyalty of our customers, is based.



08

## Final checks

A rigorous control during the whole process, vital to guarantee the final quality of our service.



10

## Ongoing training

At ARRI we believe in and are firmly committed to the continuous training of our team.





**arri**

**TALLERES MECANICOS ARRI S.COOP**

Salbatore Auzoa, nº 16  
20200 Beasain (Gipuzkoa)  
Spain

+34 943 881 640  
[info@arrimail.com](mailto:info@arrimail.com)  
[www.arriweb.com](http://www.arriweb.com)